

RECYCLE LIFECYCLE

1



You Recycle Your Items

Not everything can be recycled! Contaminants increase costs.

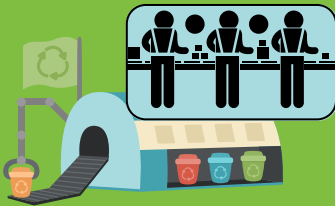
2



Collection and Transportation \$\$

Trucks use fuel and maintenance adds up. The farther the facility, the higher the cost. In Colorado's mountain towns, recycling facilities are few and far between.

3



Sorting at Recycling Facility \$\$\$

Sorting takes time, labor, and expensive machinery. If too many items are contaminated, costs increase!

4



Processing and Baling \$\$\$\$

Large compressors create bales out of different materials. Each material (plastic, glass, metal) has different processing costs.

5



Sell Recyclables (Market Demand)

If demand is low, recyclables might not sell, making it difficult to cover costs. Items that can't be sold go to a landfill, wasting time and money.
